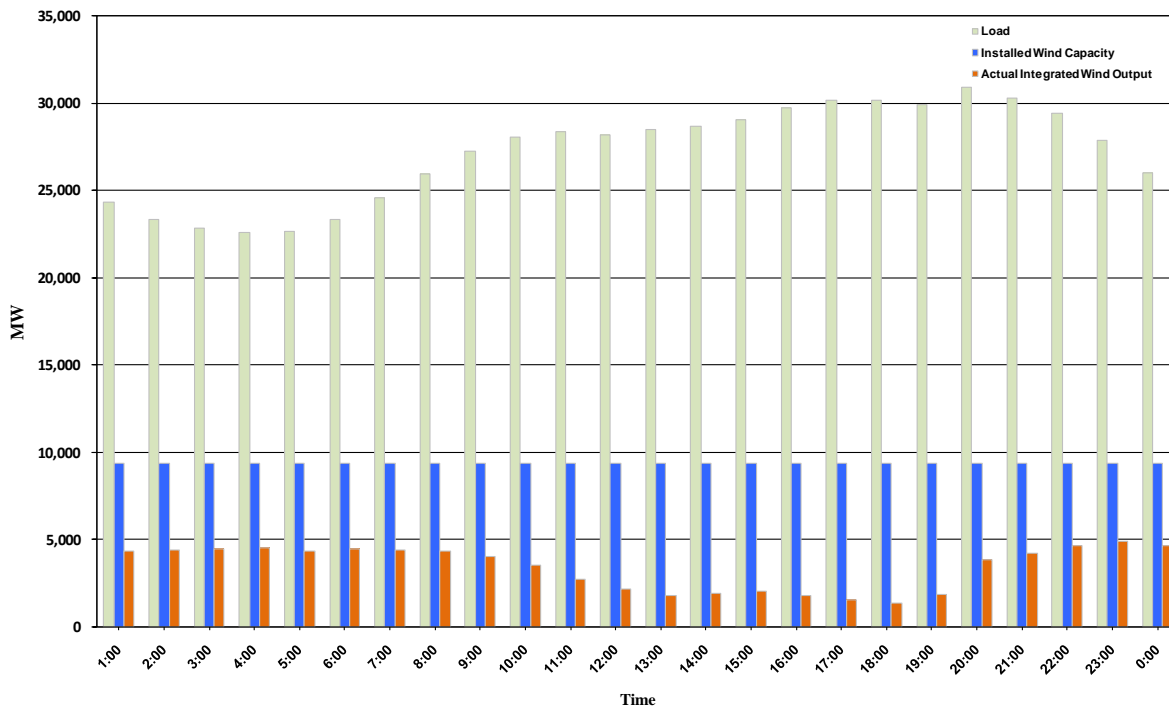




ERCOT Grid Operations Wind Integration Report: 10/30/10

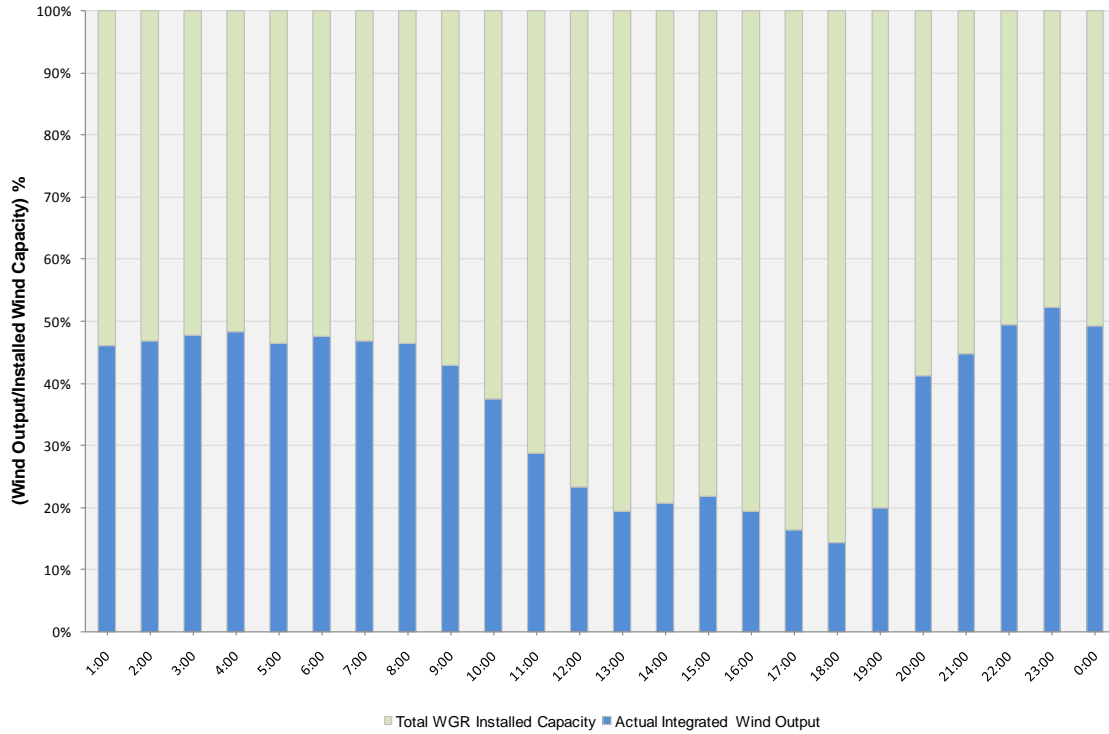
Peak Load	30,911 MW
Load Peak Hour	20
Wind Record 06/12/10	7016 MW
Max Wind value	5174 MW
Wind Peak Hour	22:23:52
Wind Integration %	18.32

Hourly Average Actual Load vs. Actual Wind Output
10-30-2010

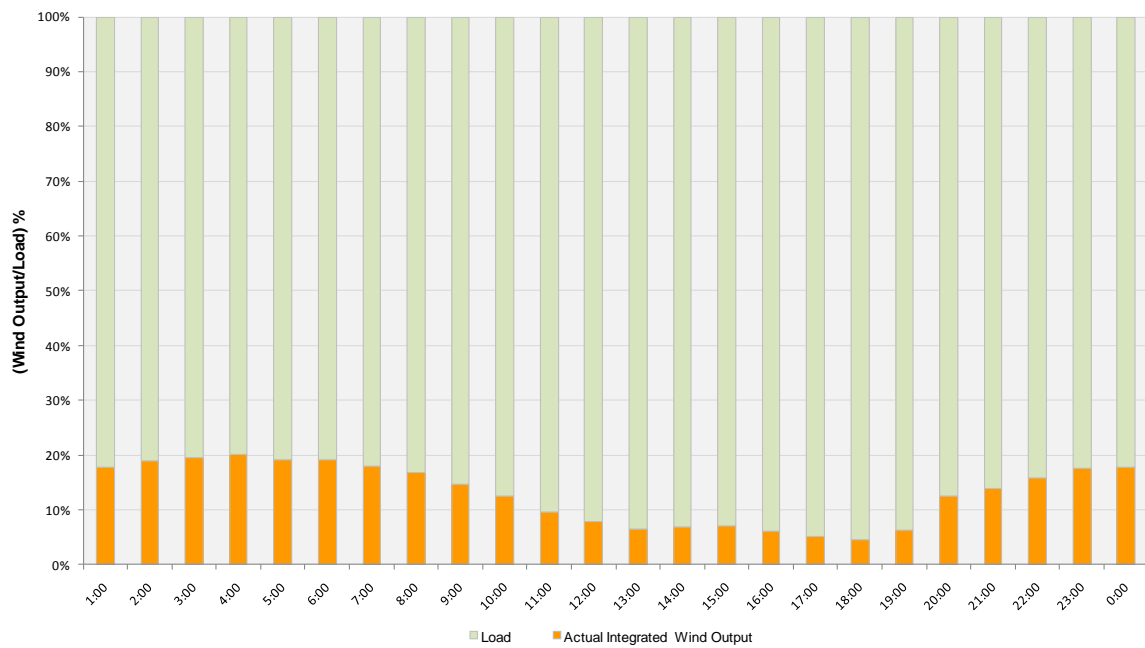




Actual Wind Output as a Percentage of the Total Installed Wind Capacity
10-30-2010



Actual Wind Output as a Percentage of the ERCOT Load
10-30-2010





ERCOT Load vs. Actual Wind Output 10/23/10 - 10/30/10

